



Application area

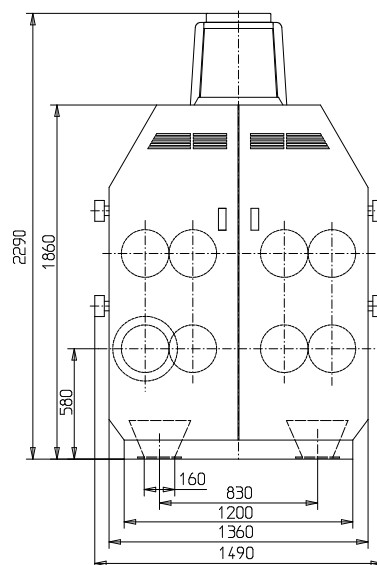
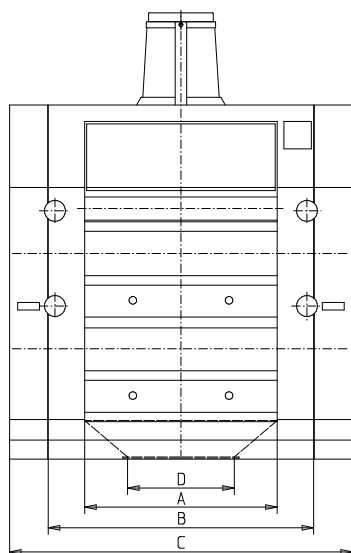
- Milling and grinding of wheat, rye, triticale, spelt or other types of grain and additional products of food industry like spices and so on
- Also usable in chemical industries and other sectors where products must be grinded gently and in stages

Principle of operation

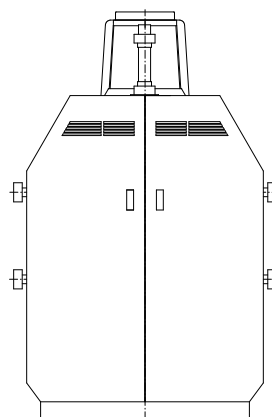
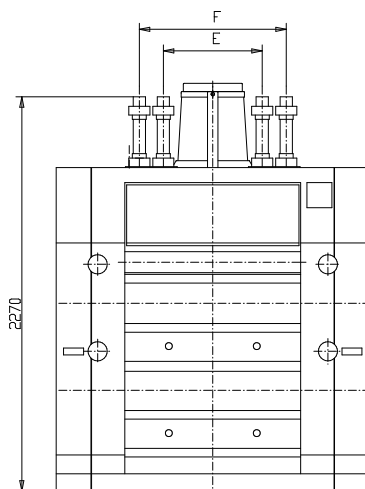
- Depending on the application area, the product will be milled, shredded or crushed between each pair of milling rollers by shearing and/or compression
- Arrangement of two milling roller pairs, one on top of the other
- Two stage milling without intermediate sifting
- Capacity and milling effect are determined essentially by the length of the milling rollers, their surface properties and condition, the peripheral speed and the size of milling gap as well

Main features

- Two stage milling without intermediate sifting
- Compact construction, easy handling and low space requirement
- Low maintenance
- Simple installation
- Simplification of the milling diagram because of lower sifting area
- Product discharging either pneumatically or by gravity
- Under floor drive
- ATEX conformity available on request



Dimensions by
gravity outlet
(Construction WS 8 G*
pictured)



Dimensions by
pneumatic product
extraction system
(Construction WS 8
PA* pictured)

* G = Gravity outlet
PA = Pneumatic product
extraction system

Type	Roll		Dimensions						Weight
	Ø	Length	A	B	C	D	E	F	
	(mm)	(mm)	(mm)	(mm)	(mm)	(mm)	(mm)	(mm)	(kg)
WS 8 - 800	250	800	810	1193	1593	560	606	-	5150
WS 8 - 1000	250	1000	1010	1393	1793	710	568	844	5500
WS 8 - 1250	250	1250	1260	1643	2043	960	568	844	5850

We reserve the right to make technical modifications.
MMW 2011/07